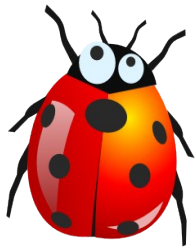


Bugzilla, Bug-squad and GNOME3



Presented By
Akhil Laddha

Agenda



- 👣 About me
- 👣 Bugzilla
- 👣 Bug triaging : In and Out
- 👣 Bugzilla Statistics
- 👣 GNOME3 contribution
- 👣 Q & A

Who am I ?

Bug Master

Evolution QA

mailto: lakhil@gnome.org

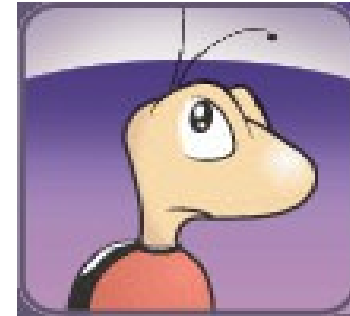
IRC nick : lakhil

#bugs, #evolution on gimpnet



What is Bugzilla ?

- 👣 Bug-Tracking System
- 👣 Open sourced
- 👣 Mozilla foundation initiative



url : bugzilla.gnome.org

GNOME Bugzilla

GNOME Bugzilla – Main Page

version 3.4.6+

[Home](#) | [New](#) | [Browse](#) | [Search](#) | | [Reports](#) | [Preferences](#) | [Log out](#) lakhil@novell.com

Welcome to GNOME Bugzilla



File a Bug



Search



User Preferences

Enter a bug # or some search terms

[Quick Search help](#) | [Install the Quick Search plugin](#)

[Bugzilla User's Guide](#) | [Release Notes](#)

[Home](#) | [New](#) | [Browse](#) | [Search](#) | | [Reports](#) | [Preferences](#) | [Log out](#) lakhil@novell.com

My Bugs

the named tag to bugs

What is Bug triaging ?

- 👣 Bug has enough information for the developers and makes sense.
- 👣 Bug has sensible "Severity" and "Priority" fields
- 👣 Bug is filed in the right bucket.

Bugzilla Fields

[[need_stacktrace](#)] [[bad_description](#)] [[bad_description+crasher](#)] [[bad_stacktrace](#)] [[obsolete](#)] [[mozilla](#)] [[not_gnome](#)] [[duplicate](#)] [[dupe+needinfo](#)] [[dupe+fixed](#)] [[fixed_in_stable](#)] [[fixed_in_head](#)]

Status: NEW ▾

[Mark as Duplicate](#)

Commit

Attachments

[Add an attachment](#) (proposed patch, testcase, etc.)

Status: NEW ([edit](#))

Product: Evolution ▾

Component: Mailer ▾

Version: 2.8.x ▾

OS: other ▾

Importance: Normal ▾ normal ▾

Target Milestone: --- ▾

Assigned To: [evolution-mail-maintainers@ximian.com](#) ([edit](#))

QA Contact: [Evolution QA team](#) ([edit](#))

Whiteboard: evolution[attachments]

Keywords: probabledup

Reported: 2006-12-18 09:30 IST by [Akhil Laddha](#)

Modified: 2009-01-06 01:55 IST ([History](#))

CC List: Add me to CC list
1 user ([edit](#))

[See Also:](#) Add Bug URLs:

GNOME target: --- ▾

GNOME version: --- ▾

Commit

Cont... (Keyword)

Name	Description	Open Bugs	Total Bugs
accessibility	Keyword for bugs related to accessibility issues.	Search	6363
API	Application Programming Interface	Search	1164
BLOCKED_BY_FREEZE	This keyword should be used for bugs for which action can be taken by the maintainer once feature/ui/string/code freeze is removed, but for which all further actions are blocked until that time. Should be reserved for bugs containing a patch.	Search	81
build	problems with the build system, source tree, etc (but not packages)	Search	679
documentation	This bug (or something in it) needs documenting.	Search	1789
gnome-love	Marking a bug with this keyword means that you're willing to help someone fix the bug, or that it should be fixable by a beginner without any help. This should ONLY be set by a maintainer or people familiar with the code base, and ONLY when it looks like a project suitable for a new developer looking for a task.	Search	2850
HELPWANTED	Usually added by component owner: help appreciated here!	Search	184
HIG	Bug reporting an area where an application does not follow the HIG.	Search	612
I18N	This is a internationalization issue. This includes strings not marked for translation, things not working in certain locales etc. This is the infrastructure to support L10N.	Search	2865
keynav	Bug involves keyboard navigation (or lack of).	Search	815
L10N	This is a localisation issue. Including errors in localisations, typos, etc. Adding locations and weather stations is one example. Correcting date and time formats is another.	Search	2932
memory	Keyword for bugs filed about various problems regarding memory, from excessive memory use due to poor design to usage of uninitialized values identified by a tool such as valgrind.	Search	436
mozilla	Caused by mozilla bugs	Search	182
multihead	Keyword for bugs related to multihead displays.	Search	128
perf	A keyword for performance bugs.	Search	617
portability	This keyword indicates that this bug is related to the porting of GNOME to non-linux platforms, to compilers other than gcc, or to architectures other than ia32.	Search	582
pref	The bug is a request for adding a configuration option.	Search	78
printing	printing / preview issues	Search	323
probabledup	This bug is probably a duplicate of another bug but the person who added the designation doesn't have the time to search for the original offhand.	Search	1566
qa	bugs that describe testing that needs to be done (and can be done by non-programmers)	Search	242

- Url <https://bugzilla.gnome.org/describekeywords.cgi>

Cont... (whiteboard)

Bugzilla Whiteboard Topics

evolution[accounts] [Search Bugzilla](#)

Bugs related to account setup, management, implementation, etc. Primarily for mail accounts but may also apply to remote address book or calendar accounts.

evolution[attachments] [Search Bugzilla](#)

Bugs related to email and iCalendar attachments. Applies to both Evolution and Evolution-Data-Server products.

evolution[caldav] [Search Bugzilla](#)

Bugs related to interacting with CalDAV servers. Applies to both Evolution and Evolution-Data-Server products.

evolution[categories] [Search Bugzilla](#)

Bugs related to categories for calendar events, tasks and memos. Applies to both Evolution and Evolution-Data-Server products.

evolution[cleanup] [Search Bugzilla](#)

Bugs related to cleanup chores: fixing compiler warnings, refactoring, migrating away from deprecated API, etc.

evolution[compeditor] [Search Bugzilla](#)

Bugs related to the editor window for calendar events, tasks and memos.

evolution[composer] [Search Bugzilla](#)

Bugs related to Evolution's mail composer. Applies to both Evolution and [GtkHtml](#) products.

evolution[dbus] [Search Bugzilla](#)

Topic for bugs related to the replacement of Bonobo with D-Bus in Evolution-Data-Server 2.30.

evolution[disk-summary] [Search Bugzilla](#)

Transient topic for bugs related to the SQLite-based *disk-summary* feature in Evolution 2.24.

evolution[etable] [Search Bugzilla](#)

Bugs related to Evolution's infamous ETable widget.

evolution[express] [Search Bugzilla](#)

Bugs related to Evolution's "express" mode.

- Url <http://live.gnome.org/Evolution/BugzillaTopics>

Cont...

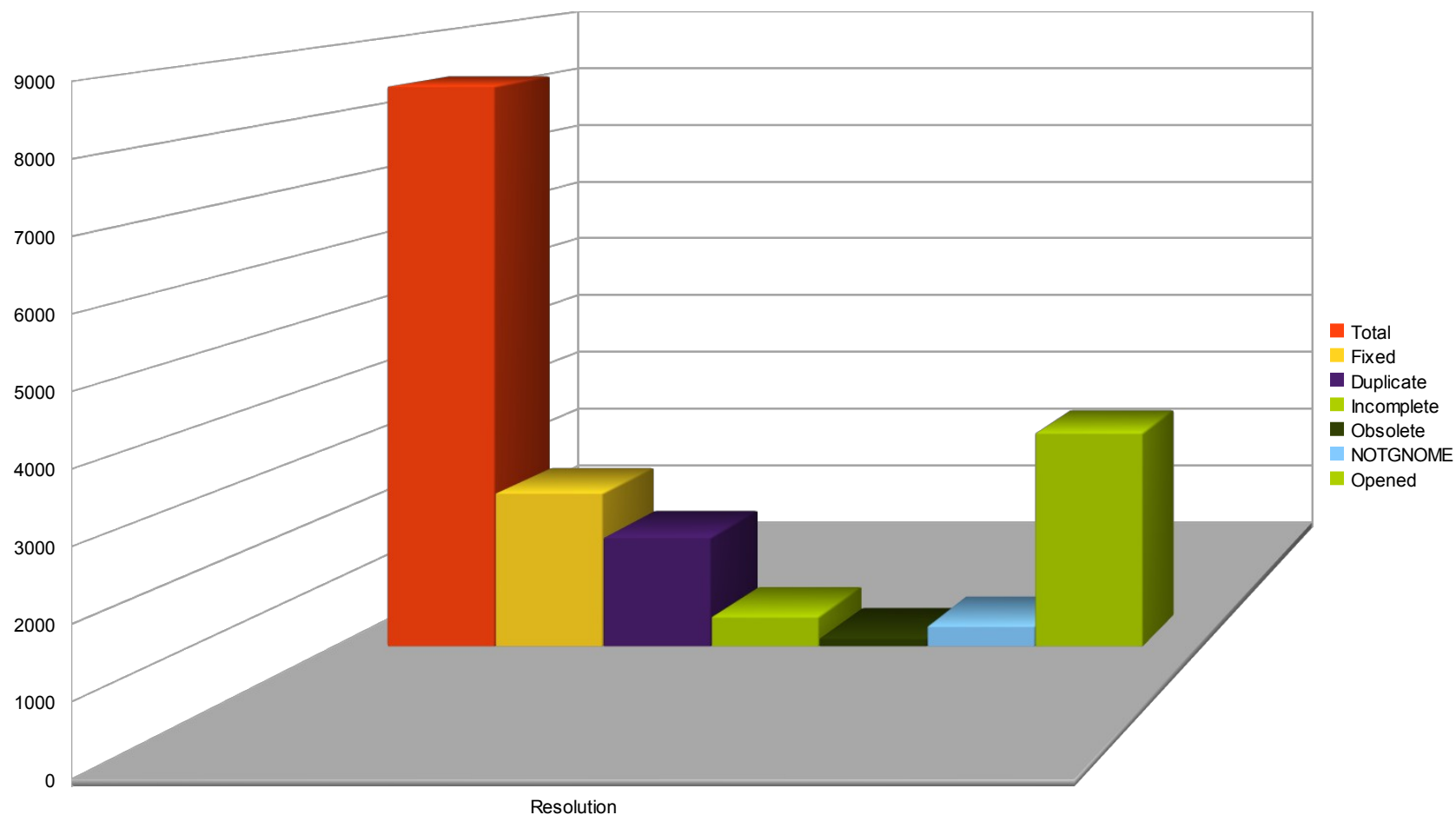
Bug Types :

- 👣 Crash
- 👣 Function failure
- 👣 Feature
- 👣 Usability
- 👣 Regression

Watch out Modules like gnome-panel, vte, pango

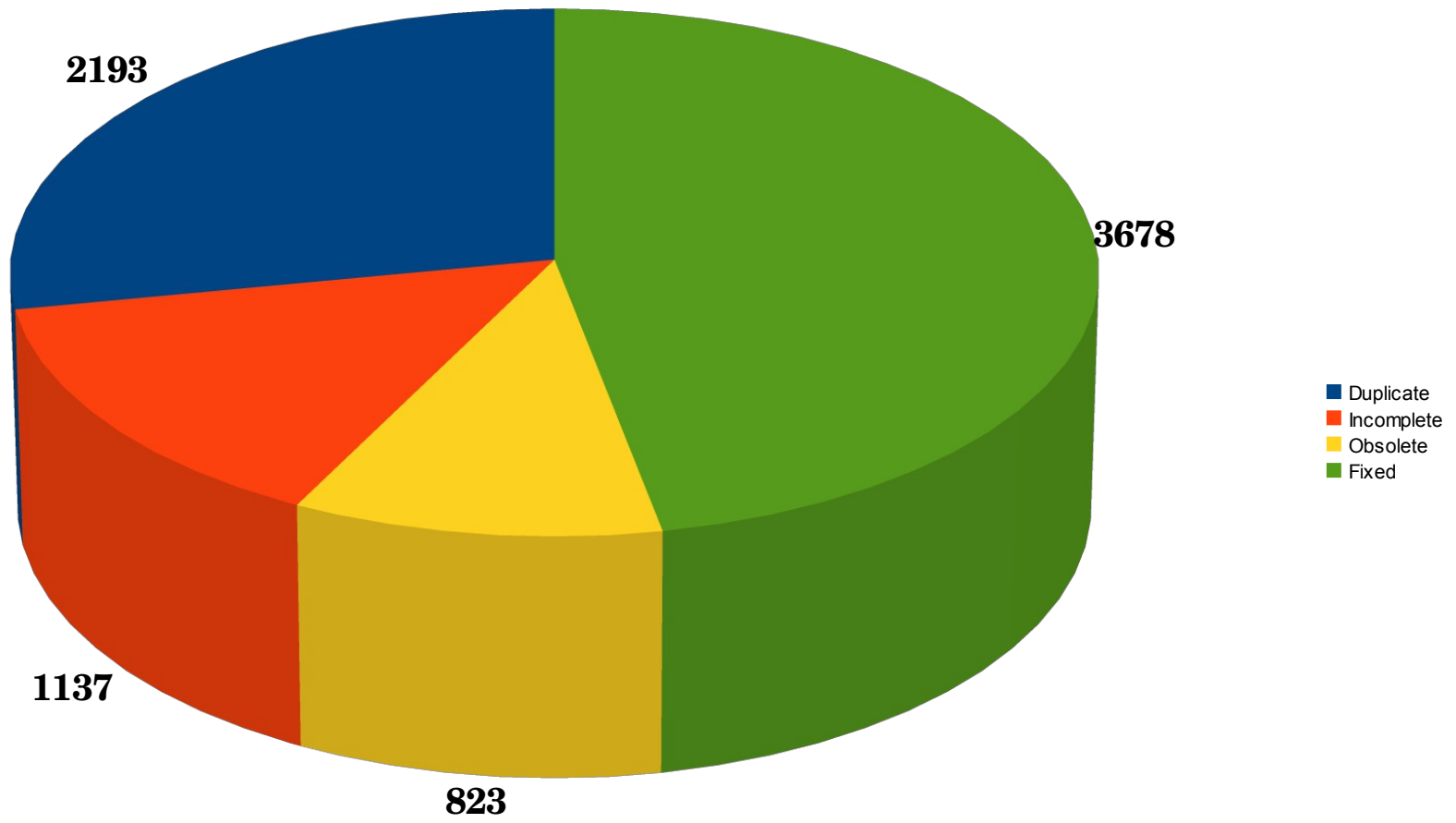
Do we need bug triaging ?

Graph only against new bugs (Desktop) in last 6 months (Jan10-Jun10)

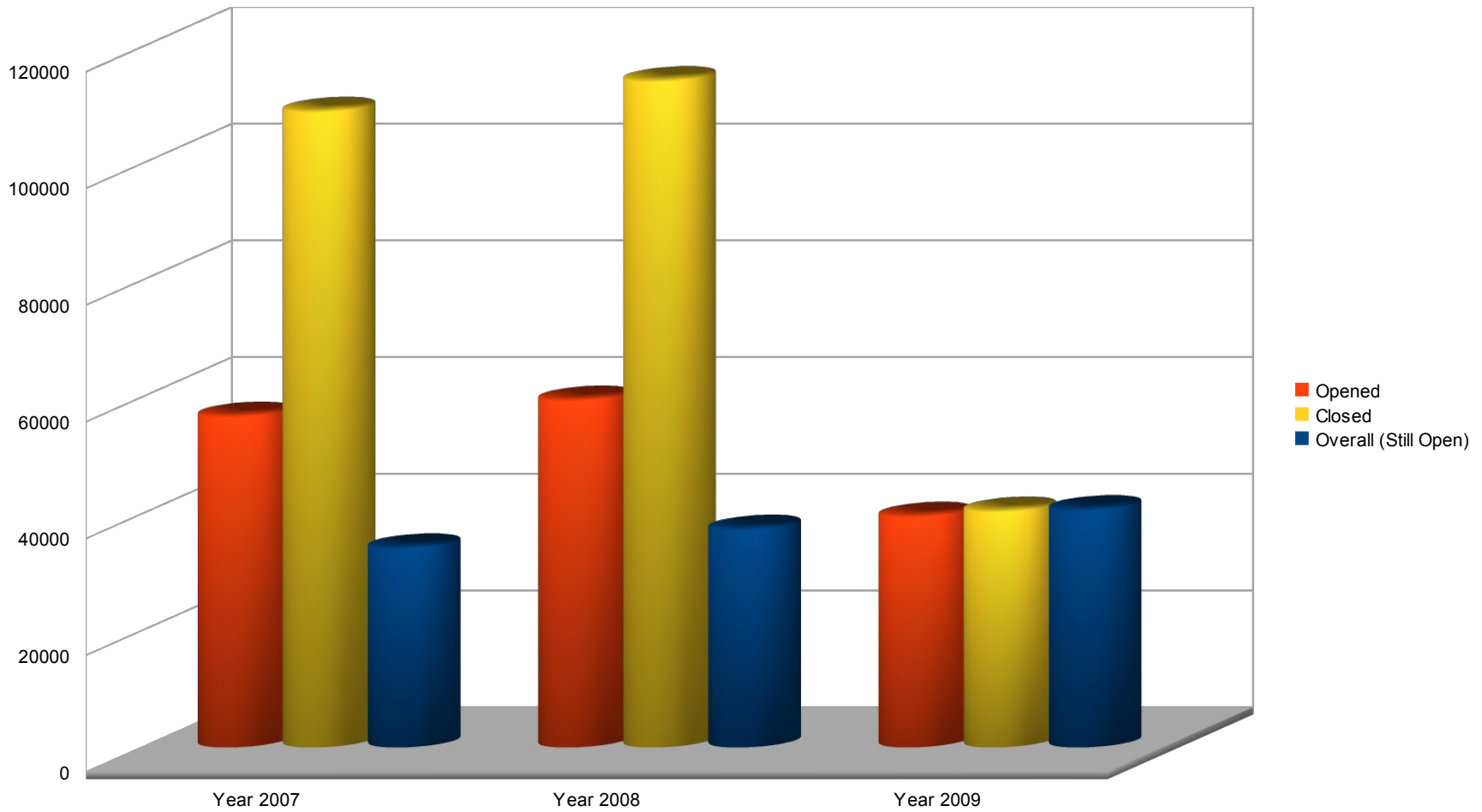


Cont...

Bugs closed (Desktop) in last 6 months (Jan10-Jun10)



Bugzilla Statistics



Who does bug triaging ?

- 👣 Highly Motivated bug squad members
- 👣 Maintainers
- 👣 Release team members
- 👣 Advanced Users

Bug triager's quality

- 🐾 Sensible
- 🐾 Patience
- 🐾 Friendly
- 🐾 Listener

Roles and Responsibility

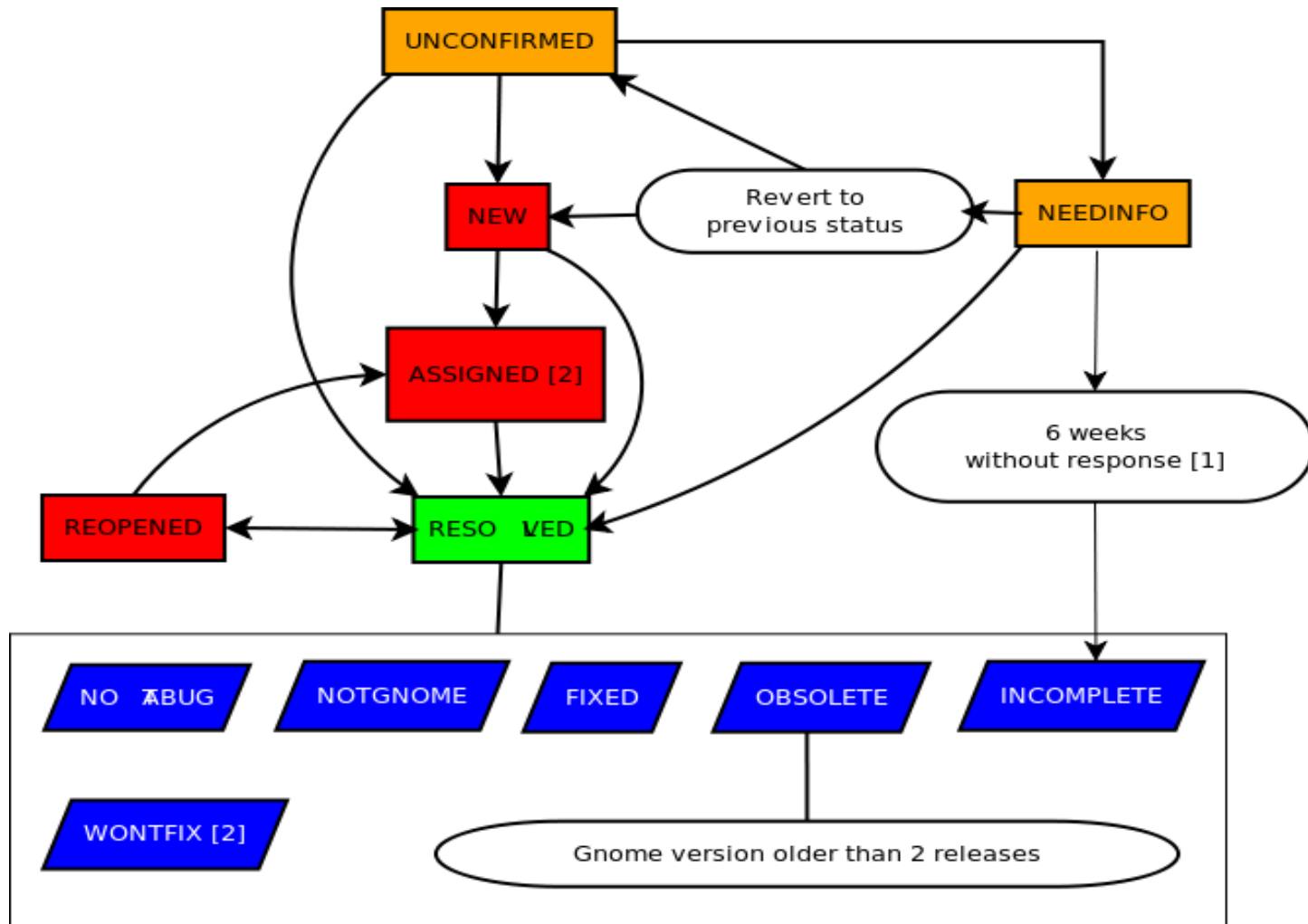


- 👣 Assists in the prioritization of the defects
- 👣 Assigns the defects to the appropriate developer
- 👣 Helps in raising the quality of GNOME

How to start ?

- 👣 Create a bugzilla account
- 👣 Read bug triaging guide lines
- 👣 Read stock responses
- 👣 Login to IRC #bugs
- 👣 Join bug-squad
- 👣 Ask for permission

Triaging Flow chart



[1] It's not always 6 weeks. Some maintainers explicitly asked to not close after 6 weeks

[2] Only for maintainers

Cont... (Status)

STATUS	RESOLUTION
<p>The status field indicates the general health of a bug. Only certain status transitions are allowed.</p>	<p>The resolution field indicates what happened to this bug.</p>
<p>UNCONFIRMED This bug has recently been added to the database. Nobody has validated that this bug is true. Users who have obtained permissions from the bugsquid may confirm this bug, changing its state to NEW. Or, it may be directly resolved and marked RESOLVED, or more information may be necessary, moving it to NEEDINFO.</p> <p>NEW This bug has recently been added to the assignee's list of bugs and must be processed. Bugs in this state may be accepted, and become ASSIGNED, passed on to someone else, and remain NEW, or resolved and marked RESOLVED.</p> <p>ASSIGNED This bug is not yet resolved, but is assigned to the proper person. From here bugs can be given to another person and become NEW, or resolved and become RESOLVED.</p> <p>NEEDINFO More information from the reporter is needed to proceed further in fixing this bug. This should <i>not</i> be used when someone needs more information from a developer - a NEW or ASSIGNED bug implicitly needs more information from the developer.</p> <p>REOPENED This bug was once resolved, but the resolution was deemed incorrect. For example, a WORKSFORME bug is REOPENED when more information shows up and the bug is now reproducible. From here bugs are either marked ASSIGNED or RESOLVED.</p>	<p>No resolution yet. All bugs which are in one of these "open" states have the resolution set to blank. All other bugs will be marked with one of the following resolutions.</p>
<p>RESOLVED A resolution has been taken, and it is awaiting verification by QA. From here bugs are either re-opened and become REOPENED, are marked VERIFIED, or are closed for good and marked CLOSED.</p> <p>VERIFIED and CLOSED GNOME does not substantially use VERIFIED or CLOSED. When used, they indicate that a third party has checked to see that a bug was properly resolved.</p>	<p>FIXED A fix for this bug is checked into the tree and tested.</p> <p>DUPLICATE The problem is a duplicate of an existing bug. Marking a bug duplicate requires the bug# of the duplicating bug and will at least put that bug number in the description field.</p> <p>WONTFIX The problem described is a bug which will never be fixed.</p> <p>NOTABUG The problem described is not actually a bug, but a design choice of some sort.</p> <p>NOTGNOME The bug is either not in a module that is part of GNOME, or is caused by something outside of GNOME that cannot be worked around or otherwise resolved by the GNOME application.</p> <p>INCOMPLETE</p>

How do we collaborate ?

👣 Home page - <http://live.gnome.org/Bugsquad>

👣 Mailing list gnome-bugsqaud@gnome.org

👣 Subscription url

<http://mail.gnome.org/mailman/listinfo/gnome-bugsquad>

👣 #bugs on gimpnet

👣 Organize bug day

GNOME3 Goals : Helping hands

- 🐾 Revamp our User Experience
- 🐾 Streamlining of the Platform
- 🐾 Promotion of GNOME



Conclusion

- 👣 GNOME need triagers
- 👣 Easy to start
- 👣 Good opportunities ahead



Andre !



Special Thanks !



Q & A



Credits

- <http://goodgoliath.goodgoliath.net/images/thumbs/>
- <http://allforlinux.com/2009/07/cool-gnome-3-mockup/>
- http://www.isp-planet.com/services/trouble_ticket/bugzilla.1
- freeiconsweb.com
- <http://www.cherububble.com/whoami.htm>
- <http://www.saladeprensa.org/art787.htm>
- <http://blogs.gnome.org/aklapper/category/lang-en/>